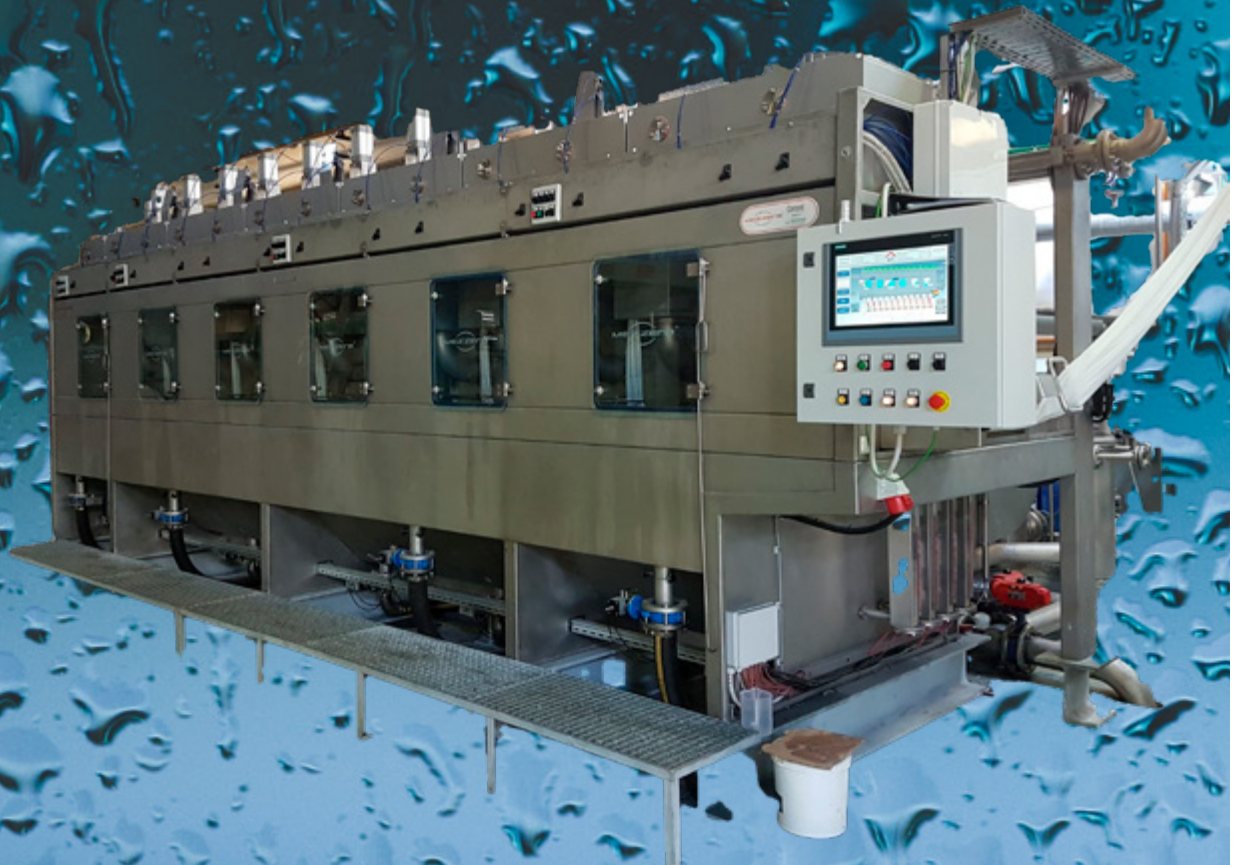




Mezzerà CONCORD

Continuous Washing after Dyeing
and Printing for Knitted and Woven
Fabrics in Rope Form

The excellence
in continuous
rope washing line



Continuous treatment for fabrics in rope form

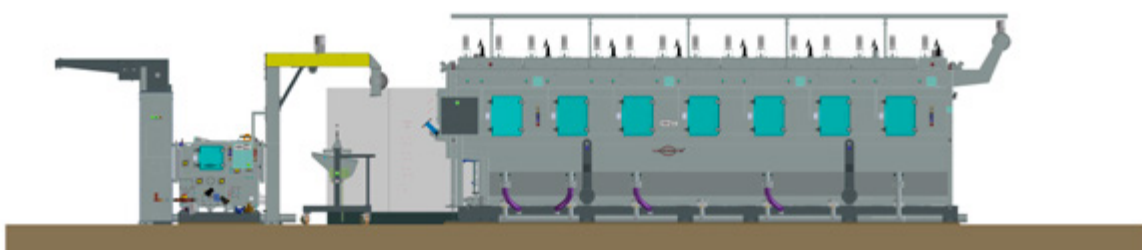
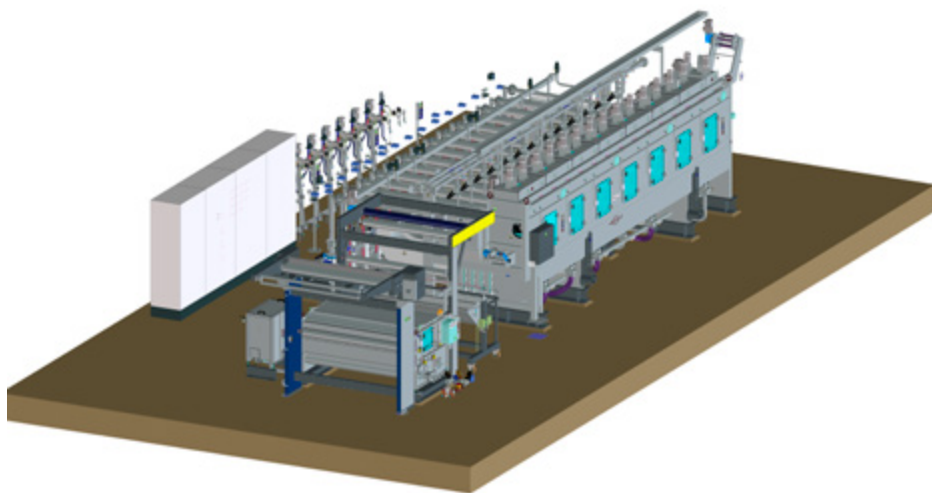
Fabric is transported by overflow, therefore tensionless running, different temperature in the various treatment sections, independent squeezing mangle for each channel, high interchange between fabric and counter current liquor.

The Concord represents the ideal improvement in the field of textile machines for the treatment of woven and knitted fabrics in rope form thanks to reduced consumption and the limited pollution due to wastewater.

The actual market situation greatly influences the production dynamics. Concord represents a compact machine with low consumption, high washing efficiency, and great flexibility, especially for fabrics whose weights are between 50 and 700 g/m².

This innovative machine is the result of Mezzera's great experience in designing and manufacturing machines for the treatment of wet fabrics. It is ideal for the pre-treatment of artificial and synthetic fibres, for the neutralising treatment of fabrics after mercerising or caustification, for the relaxing treatment of fabrics, for the treatment of lycra items, and for the after bleaching, dyeing, and printing washing.

Concord has been the market leader for many years, as testified by its indisputable sales success. In terms of flexibility and quality it represents a technological revolution in rope washing (Mezzera was the first to introduce this treatment when we launched the Niagara model).





Furthermore, starting from the experience of our forerunners, Concord is reliable even for bleaching of plain and tubular knitted fabrics.

Concord, completely made of stainless steel, consists of a number of channels (8 to 16) which can be subdivided into four or five sections. Thanks to the new design of the fabric feed pipes, the machine can reach higher working mechanical speeds, up to 100 m/min.

From a technological point of view this machine can be divided into four or five sections according to the customer's production requirements.

While moving from one channel to the next one, the fabric is efficiently washed and squeezed. This process reduces the pollution due to wastewater and at the same time improves the washing results. The liquor undergoes counter-current flow between channels of the same section but it is possible to deliver liquor from one section to another according to specific technological requirements.

Thanks to the overflow transport system the fabric moves ahead constantly immersed in the liquor and totally tensionless. Each section is independent. Each channel is equipped with its own temperature control device (max working temperature 98 °C), water and chemical-product inlet valves, heat exchanger, circulation pump, and an interchangeable filter.

The new squeezing rollers are located in a new functional position to remove fabric-sliding or weft-opening problems. Drive comes from independent inverter-controlled AC motors to ensure perfect synchronisation and continuous speed adjustment without any risks. Each channel has its own control unit to keep constant the preset quantity of fabric, thus ensuring equivalent dwelling times for the whole batch. Each channel can hold 500 litres of liquor and up to 50 kgs of fabric.

The Concord control system is based on a state-of-the-art PLC which accurately controls the fabric speed and the treatment parameters such as water, chemical product, and steam dosage.

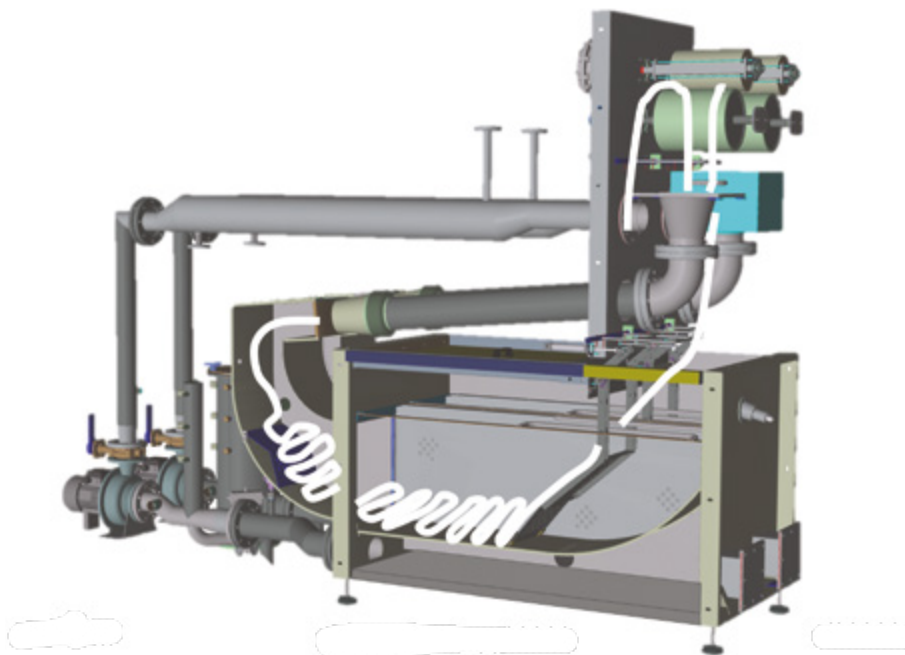
Features that make Concord a point of reference on the market:

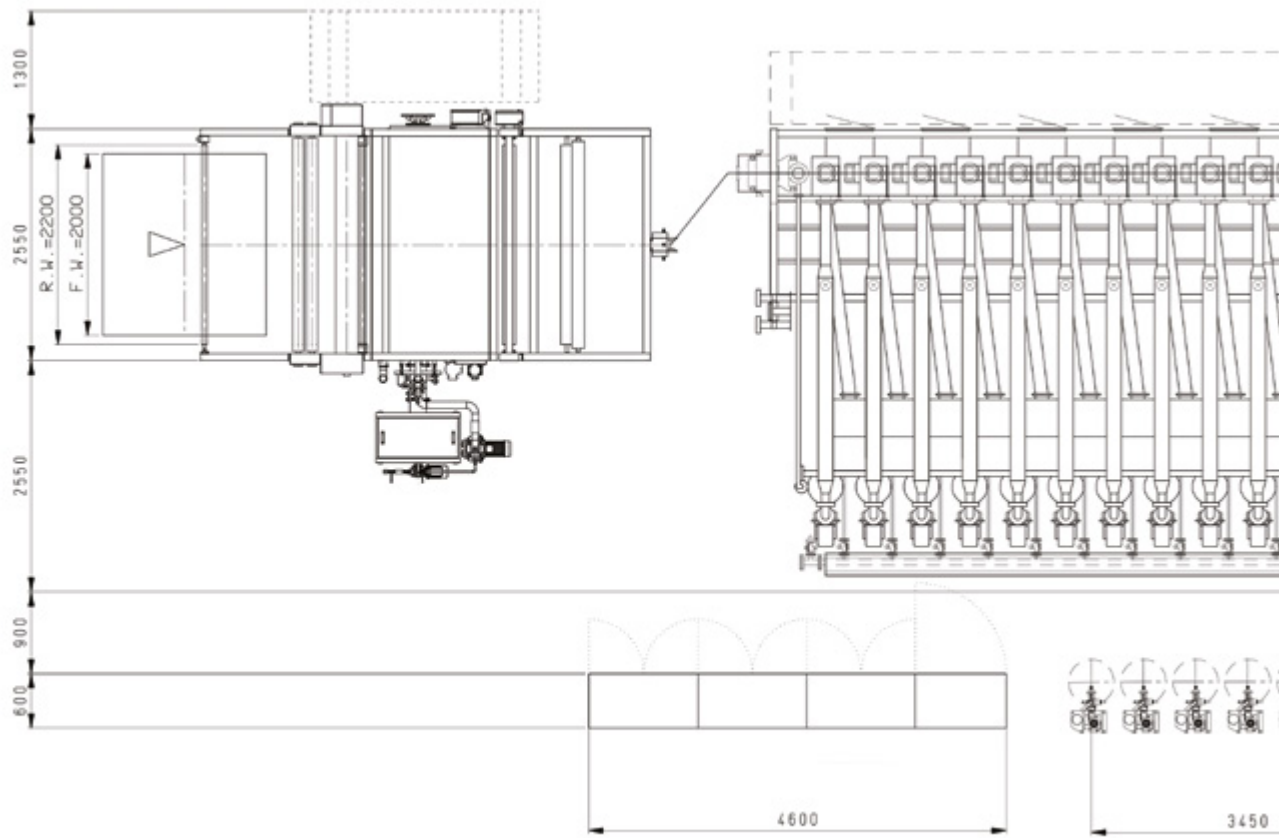
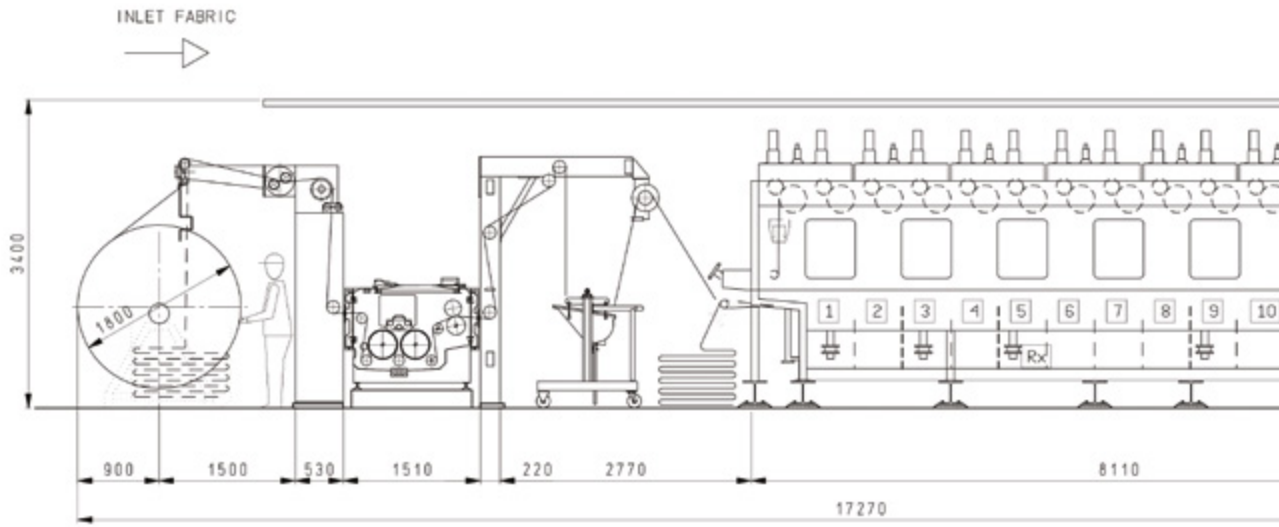
- Maximum working temperature up to 98 °C
- Maximum mechanical speed 100 m/min
- Average production speed 60 m/min
- Water consumption from 8 to 15 l/kg of treated fabric
- Low energy consumption
- Intense and efficient interchange between bath and fabric
- Simple and intuitive control system to set up the operating parameters
- Automatic chemical dosage
- Bath level adjustment mechanism per each channel section
- Heat recovery system
- Adapt for any kind of fabric (light and heavy) woven and knitted

CHANNELS	LENGTH (A) mm	INSTALLED POWER (Kw)
8	6320	26
10	7320	32
12	8440	38
14	9600	44
16	10560	50



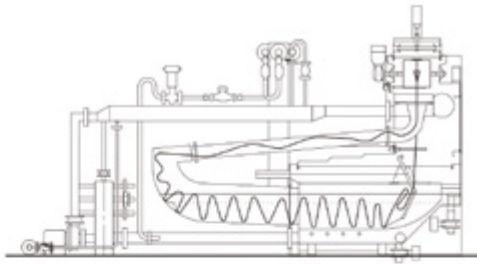
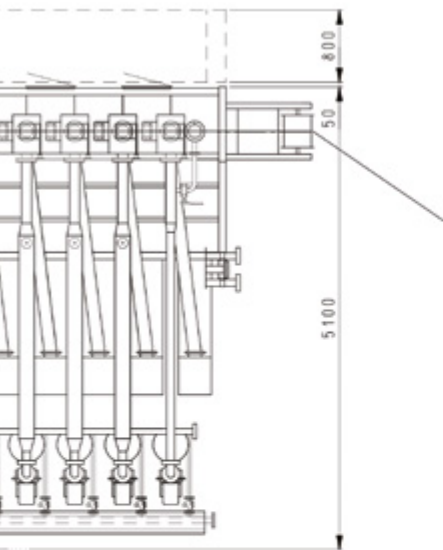
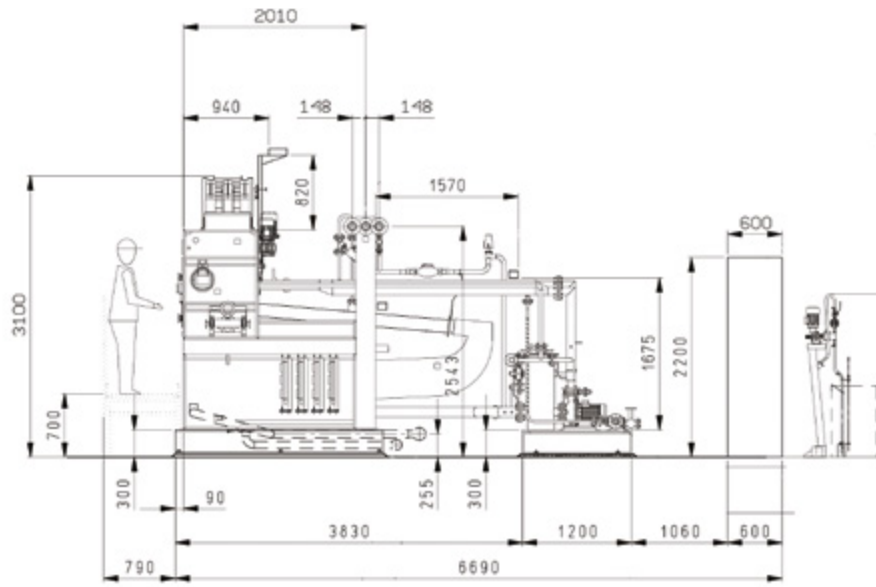
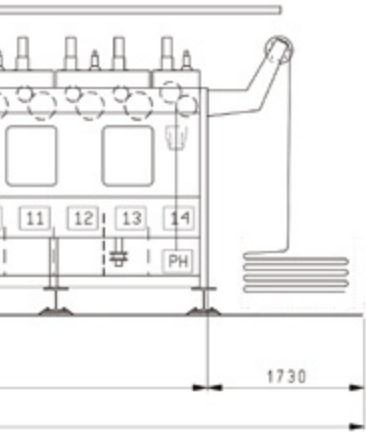
The Concord meets the solid design and manufacturing traditions that have always characterised Mezzera. Thus the inverter-controlled drive system, fabric transportation by overflow action, automatic control of the process, completely stainless steel manufacturing, and the ergonomic design are all features that testify to the effort to produce a product that is easy to manage and accessible for the machine operator and the maintenance worker.





Electrical cabinet

Dosing pumps



Section view



mps

Let's be brilliant. Together.

We understand you want breakthrough technologies to lead you through your digital journey. That's why we're passionate about driving your business growth with a scalable portfolio of products, solutions, services, support, and world-class partnerships for the manufacturing of signage, packaging, textiles, ceramic tiles, and building materials with a wide range of printers and inks. Our unwavering commitment is to increase your profits, cut costs, improve productivity, and optimise efficiency — job after job, year after year. We're obsessed with your success. And we definitely believe we have the right people, technology and experience to help your business achieve its goals. Visit www.efi.com/reggiani or call +39 035 3844511 for more information.



Nothing herein should be construed as a warranty in addition to the express warranty statement provided with EFI products and services.

AutoCal, Best Eye, ColorGuard, ColorPASS, ColorRight, ColorWise, Command WorkStation, Cretachrom, Cretaprint, the Cretaprint logo, Cretaprinter, Cretaroller, Divisional Graphics, Distancing Graphics, DocBuilder, Dynamic Wedge, EDOX, EFI, the EFI logo, Electronics For Imaging, FabriVU, Fast-4, FASTRIP, FASTDRIVE, Fiery, the Fiery logo, Fiery Compose, Fiery Driven, the Fiery Driven logo, Fiery Edge, Fiery Essential, Fiery HyperRIP, Fiery Impose, Fiery Impress, Fiery ImageViewer, Fiery Intensify, Fiery JobExpert, Fiery JobFlow, Fiery JobMaster, Fiery Navigator, Fiery Prep-it, Fiery Prints, the Fiery Prints logo, Fiery TrueBrand, FreeForm, InkIntensity, Inkware, IQ, MicroPress, OneFlow, PressVu, PrintMe, the PrintMe logo, Prograph, ProGraphics, RIPChips, RIP-While-Print, SafeGuard Graphics, Spot-On, Spot Pro, UltraDrop, UltraPress, UltraTex, UltraVu, UV Series 50, VUTEK, the VUTEK logo, and WebTools are trademarks or registered trademarks of Electronics For Imaging, Inc. and/or its wholly owned subsidiaries in the U.S. and/or certain other countries.

All other terms and product names may be trademarks or registered trademarks of their respective owners and are hereby acknowledged.