



Nozomi C18000 Plus

Single-pass LED Inkjet Technology
for Corrugated Board, Paper Packaging and Displays

Revolutionize your
business in a single pass.

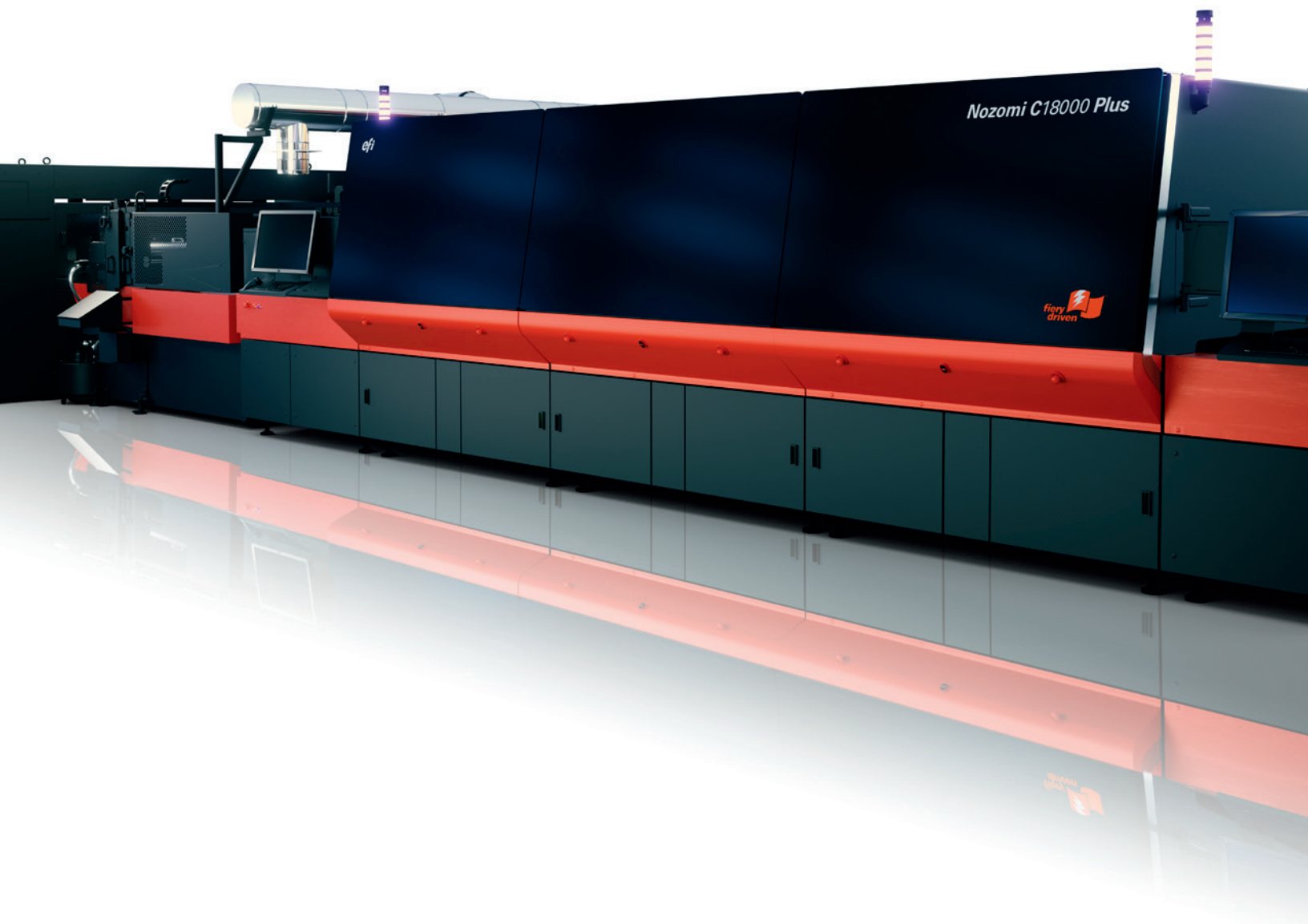


Image quality just got brilliant.
Productivity just went turbo.
Capabilities just expanded.
And your competitive edge
just got sharper.

Revolutionize your business in a single pass with the EFI™ Nozomi C18000 Plus digital press for corrugated packaging. It brings stunning image quality, productivity, and uptime to your manufacturing floor in the form of six major enhancements. Together, they make the Nozomi C18000 Plus the single best LED technology for your packaging or display business goals. Our cross-functional teams understand the unique demands of corrugated and have leveraged our latest advances in printing and inkjet technology to create a revolutionary solution that will drive your business success—job after job, year after year.

*Short runs
and variations
to enhance
marketing
possibilities*



Nozomi digital inkjet corrugated printing provides you and your customers with:



Lower costs and higher productivity

The EFI Nozomi C18000 Plus enables cost-effective, high-quality, direct-to-board digital printing and eliminates expenses and a great number of steps associated with printing plates, printing, and lamination in traditional analog production.

- Eliminate up-front make-ready printing plate costs, time, and storage
- Eliminate ink mixing and associated storage and labor
- Reduce labor costs and workflow steps, and eliminate scrap waste by printing direct to substrate



Fast response to market demands

Accommodate customer requests for versioned or variable data jobs, last-minute edits, and changing buying decisions. And with digital printing, you can produce cost-effective, on-demand, and just-in-time jobs, fast-cycle proofs and prototypes, and customized campaigns.



Environmental sustainability everyone demands

Single-pass, digital inkjet printing for corrugated packaging contributes to a real circular economy thanks to a reduction of overproduction, waste and storage costs. LED curing reduces power consumption and eliminates the use of water to wash presses and inks.

Nozomi inks meet OCC certification for recyclability and re-pulpability. They also meet the GREENGUARD Gold Standard with no hazardous volatile organic compounds, and they do not require vapor recovery.



Nozomi printers also are recognized as the most energy efficient based on the ISO 20690 energy standard.

Ready for industrial use



The Nozomi C18000 Plus is a robust and reliable printer ready for industrial use.

- Industrial printing speeds
- Built for 24/7 production
- No stops in production for new printing plates when changing models
- Transport optimizer controls warp and edge-to-edge drop placement with a patented vacuum adjust that increases overall performance and the range of substrates you can print on
- Innovative imaging technology and ink delivery system preserves print head life and minimizes stoppages
- No need for multiple or highly qualified operators
- Enhanced user interface experience offers instant file uploads and faster job setup, a rush proof print feature, and nozzle compensation predictor

Six improvements that turn this Nozomi into a Plus



Image quality

Smart Technology and Fiery® NZ-1000 combined create a more flexible and reliable system with drop-on-demand control, color registration and PH alignment optimization to deliver the highest print quality.



Transport optimizer

Optimized warp control designed to print higher volumes profitably. Innovations driving higher speed and productivity will unlock new opportunities for the analog-to-digital transformation.



Software performance

Renewed software with new applications, such as nozzle compensation predictor, rush-proof and an enhanced UI, that results in reduced set-up times, errors, reprints and more.



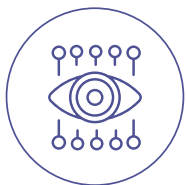
Professional services

The Nozomi Digital Solutions Program provides the support and training to ensure you are successful with your investment in digital print.



Uptime maximizer

Tools such as Cloud monitoring, EFI iQ and new Fiery features will allow tracking of production and operator performance for making better decisions based on data.



On board quality agent

Artificial vision (AV) for accurate color adjustment, nozzle out and defect detection deliver optimum print quality and an efficient quality control process that increases operator satisfaction.

High-quality printing with Genuine EFI Inks

Through our R&D efforts in advanced ink formulation, we've developed unique LED inks with the specific properties needed to produce spectacular images on corrugated substrates.



- Optimal physical characteristics in terms of color and performance
- Six colors and enhanced color gamut for Pantone® matching
- Odorless and maintain flexibility for creasing, and are hard enough to withstand rubbing
- Inks are intrinsically glossy so they don't need a top coat
- Optional white ink can be used as a base to print on dark substrates for photographic printing and reproducing brand colors; it also can be used to create special effects, such as spot gloss, and premium packaging with the use of metallic liners
- Accurate Pantone spot color reproduction, excellent gloss coating, and high graphic quality with a very reasonable ink consumption per square foot/meter
- Extremely efficient when considering the total cost of the printed unit



Nozomi's water-based primers have been specifically designed to control ink drop dispersion and enhance the performance of Nozomi inks.

- Optimized for coated papers
- Better printing quality with greater saturation and color intensity
- Versatile with optimal results for different printing conditions

Driven by Fiery, the world leader in digital front end innovation

EFI Fiery digital front ends (DFEs) are the industry standard and the most popular choice across multiple print environments. To succeed in today's highly competitive market, it is critical to have a DFE with integrated workflow and color management to achieve higher operational efficiency and output quality. The Fiery NZ-1000 DFE provides outstanding image and color quality with features to make your print results truly exceptional.

Fiery technology delivers:



- Advanced color management and extensive toolset for late-stage image editing
- Exceptional print and color quality for complex, graphically rich content
- Stunning out-of-the-box color with the smoothest color blends, maximum shadow detail, and superb image definition
- Accurate reproduction of brand colors plus color matching for consistent print results
- Intelligent automation that can analyze print jobs and dynamically choose the optimal print settings, reducing setup time
- Efficient job management with easy handling of short runs and versioned or variable data printing jobs
- Full visibility into your production with accurate ink estimates and reporting of the actual ink used in print
- Advanced bladed hardware architecture with the processing power to ensure the highest throughput



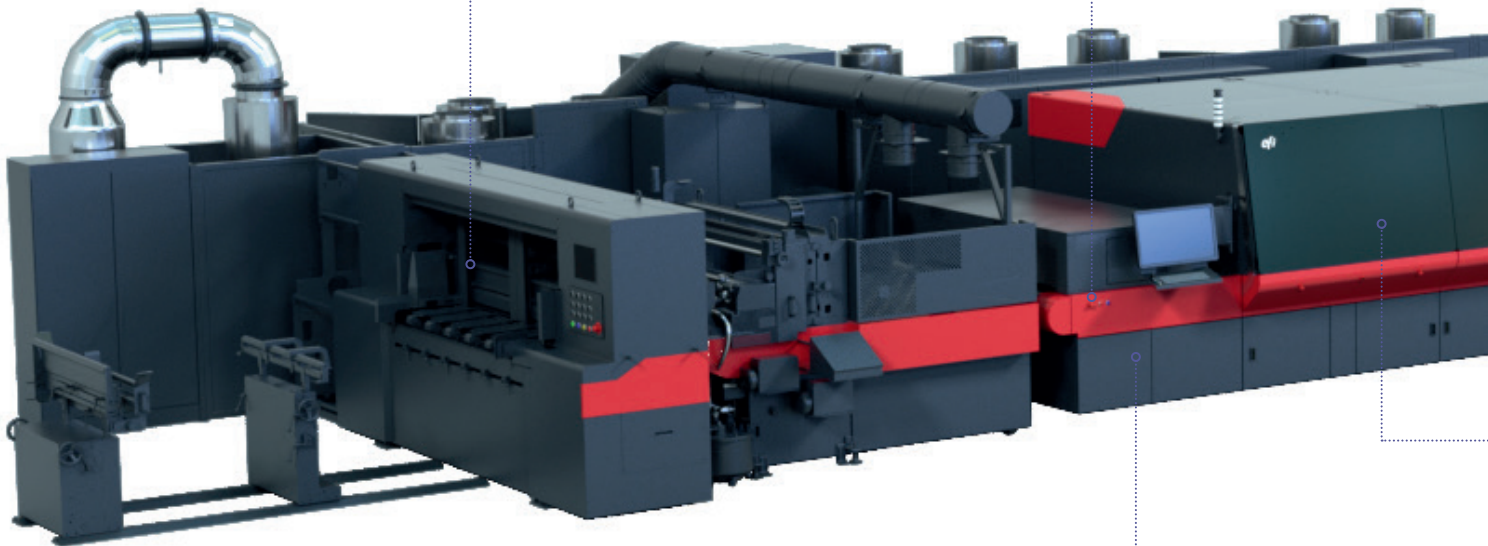
Introducing the Nozomi C18000 Plus single-pass industrial inkjet printer

FEEDER

- Bottom feeder: Non-stop feeder suitable for corrugated boards, all flutes from 0.031in to 0.47 in (0.8 mm to 12 mm) thick
- Top feeder: Suitable for corrugated boards and non-rigid materials (PVC, polypropylene, etc.) from 0.2 to 0.47 in (0.5 to 12 mm) thick
- Two-line printing
- Board/sheet sizes (W x L): From 23.62 in x 23.62 in (60 cm x 60 cm) to 71 in x 118 in (180 cm x 300 cm)

PRIMER

- Two options available:
 - Standard coater
 - Enhanced coater: Allows priming on non-rigid substrates and has a drying station suitable for plastics



FIERY® DRIVEN™

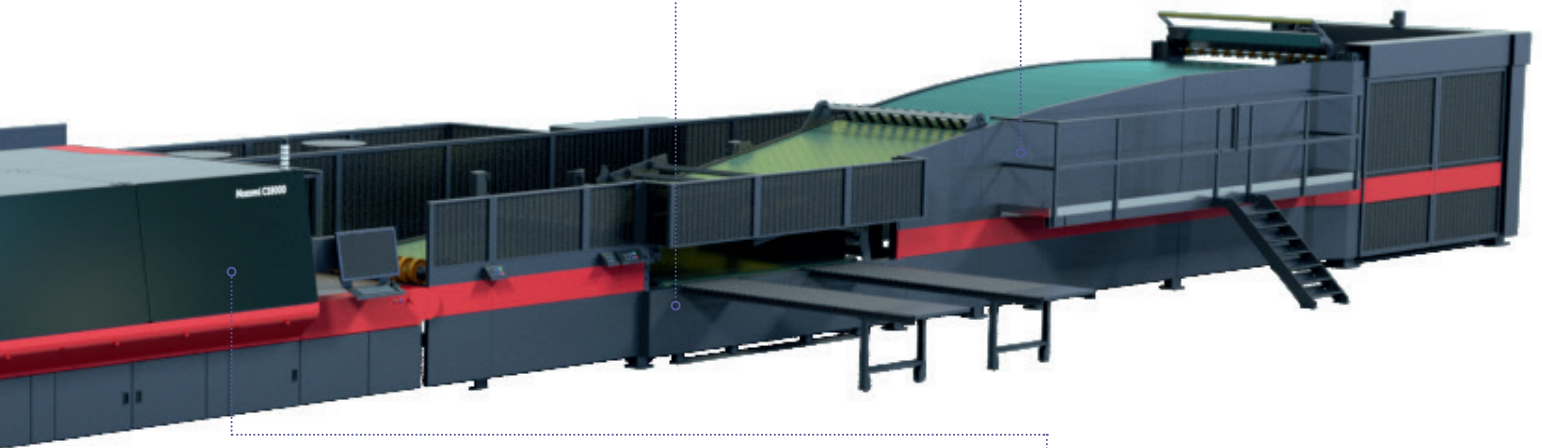
- Exceptional imaging and color quality and tools to maintain consistency
- Automated prepress workflows
- Intuitive job management interface
- Supports Adobe® PDF Print Engine to ensure consistent, predictable output
- Integration with EFI ecosystem and third parties
- Integration through JDF and the popular RESTful Fiery APIs

INSPECTION AND REJECT

- 100% in-line, post-print quality and editable inspection for printing defects

STACKING

- Automated material stacking to pallet or bundle
- Stack height:
 - Max.: 71 in (1800 mm) limited small sizes
 - Min.: 39 in (1000 mm) in production
- Stack squaring: +/- 0.8 in (20 mm) good quality boards



PRINTER

The Nozomi C18000 Plus printer is a single-pass, LED, drop-on-demand large format inkjet printer:

- Speed: Up to 246 linear ft/m (75 linear m/min)
- Native resolution: 360 dpi; effective resolution: 720 dpi
- LED White ink optional module
- Four-level grayscale
- Configurable:

CMYK

CMYK+W

CMYKOV

CMYKOV+W



ONBOARD QUALITY AGENT

- Artificial vision for accurate color adjustment and nozzle out detection

360° Nozomi Advisory Support

Value-added professional services working for you

We're there with you every step of the way – during installation, the ramp-up process, and during regular and intensive use. And we partner with you in daily operations, in maintenance tasks, during design and pre-press, and in sales and marketing – with the only purpose to ensure that you get the most out of your single-pass LED digital inkjet printing investment.



Speed up your understanding of the digital ecosystem

A new level of support

The EFI Nozomi business development program is a way for printer owners to **bridge the gap between focusing on day-to-day production and planning for the future.**

We've helped our customers accelerate and maintain profitable printing businesses and successful in-plant operations **by providing a balanced mix of professional and business development services.**



Maximize your investment in digital printing

Taking your business into the future

Together, we'll **create a distinct advantage** for your business as you leverage Nozomi's proven technology. **Streamline production and optimize operations.** Reduce turnaround time with high-volume production and job versatility.



Grow your business and increase your profitability

Taking maximum advantage of your digital investment

Our business development services are designed to drive more profits into your business.

Digital printing is an opportunity that is here for you right now. We help printers like you maximize profitability and build a foundation for long-term success.

TECHNICAL DATA

HANDLING MATERIALS	
Maximum board size	71 x 118 in (1800 x 3000 mm)
Minimum board size (bottom feeder)	24 x 24 in (600 x 600 mm)
Maximum board thickness	0.47 in (12 mm)
PRINTING TECHNOLOGY	
Maximum printing width	71 in (1800 mm)
Print speed	Up to 246 linear ft/min (75 linear m/min)
Number of colors	Up to seven
DPI	360x360 360x720
Ink type	EFI UV LED Odorless, recyclable inks
Primer	Included
Digital front end	Fiery NZ-1000
ENVIRONMENTAL SPECIFICATIONS	
Configuration	Footprint (LxWxH)
Four, six and seven colors with bottom feeder, standard coater and full stacker	120 ft x 36.44 ft x 10 ft (36.5 m x 11.28 m x 3 m)

ELECTRICAL	
Operating current	350A at 380V or 280A at 480V supply
Standby current	30A at 380V or 25A at 480V supply
Maximum consumptions	790A at 380V or 618A at 480V supply
Type of cable	3F + T // 3 poles
AIR	
Clean and dry air, 95 psi (6.5 bar)	
Nominal operating at	10.6 cf/min (300 L/min)
Peak at	113 cf/min (3,200 L/min)
INKS	
Recommended temperature of storage	
Maximum 68° F (20° C)	

Printer in development; specifications subject to change without notice.

Let's be brilliant. Together.

We understand you want breakthrough technologies to lead you through your digital journey. That's why we're passionate about driving your business growth with a scalable portfolio of products, solutions, services, support, and world-class partnerships for the manufacturing of signage, packaging, textiles, ceramic tiles, building materials, commercial print, and personalized documents with a wide range of printers, inks, digital front ends, and workflow software. Our unwavering commitment is to increase your profits, cut costs, improve productivity, and optimize efficiency — job after job, year after year. We're obsessed with your success. And we definitely believe we have the right people, technology and experience to help your business achieve its goals. Visit www.efi.com or call 800-875-7117 for more information.



Nothing herein should be construed as a warranty in addition to the express warranty statement provided with EFI products and services.

AutoCal, Best Eye, ColorGuard, ColorPASS, ColorRight, ColorWise, Command WorkStation, Cretachrom, Cretaprint, the Cretaprint logo, Cretaprinter, Cretaroller, Divisional Graphics, Distancing Graphics, DocBuilder, Dynamic Wedge, EDOX, EFI, the EFI logo, Electronics For Imaging, FabriVU, Fast-4, FASTRIP, FASTDRIVE, Fiery, the Fiery logo, Fiery Compose, Fiery Driven, the Fiery Driven logo, Fiery Edge, Fiery Essential, Fiery HyperRIP, Fiery Impose, Fiery Impress, Fiery ImageViewer, Fiery Intensify, Fiery JobExpert, Fiery JobFlow, Fiery JobMaster, Fiery Navigator, Fiery Prep-it, Fiery Prints, the Fiery Prints logo, Fiery TrueBrand, FreeForm, Inktensity, Inkware, IQ, MicroPress, OneFlow, PressVu, PrintMe, the PrintMe logo, Prograph, ProGraphics, RIPChips, RIP-While-Print, SafeGuard Graphics, Spot-On, Spot Pro, UltraDrop, UltraPress, UltraTex, UltraVu, UV Series 50, VUTEk, the VUTEk logo, and WebTools are trademarks or registered trademarks of Electronics For Imaging, Inc. and/or its wholly owned subsidiaries in the U.S. and/or certain other countries.

All other terms and product names may be trademarks or registered trademarks of their respective owners and are hereby acknowledged.