



Pro 30h

Wide Format Inkjet Printer

Widen your
competitive advantage



Widen your capabilities, versatility and productivity with the EFI Pro 30h wide-format printer

The EFI™ Pro 30h hybrid flatbed/roll-fed LED entry level production printer brings a whole new meaning to the word “wide.”

It prints on a wide variety of substrates for a wide variety of applications, all with superior image quality and environmentally friendly benefits. The result is that the EFI Pro 30h broadens your capabilities, versatility and productivity – all at a very attractive price point.



| | | | |
|-----|---|-------------|-------|
| 64 | A | BACCHENARAU | 5 min |
| 834 | A | SANTAMARIA | 9 min |
| D20 | A | PG MARITIM | 4 min |



CENTURION
ELEGANT TIMEPIECES

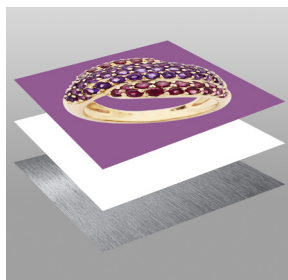
Offer premium-margin day/night backlit graphics using EFI's industry-leading white ink and multi-layer print capability.

Wide capabilities that give you a competitive edge

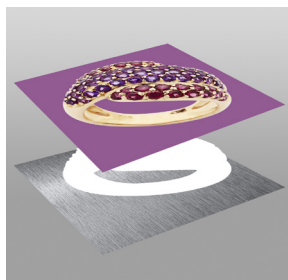
The 3.2-meter EFI Pro 30h printer is ideal for commercial printers, sign shops and in-plant printers looking to start, upgrade or add board and roll-to-roll print jobs to their wide format capabilities. This CMYK printer comes standard with two channels of white for those high value prints. It features UltraDrop™ Technology 7pL printheads with grayscale printing up to 1200 dpi and a magnetic linear drive for better drop placement, resulting in a greater color gamut.

EFI white ink leads the industry in brightness and opacity, and can be imaged like any other color, in grayscale, up to 1200 dpi, and using our multilayer printing with up to five layers in a single pass.

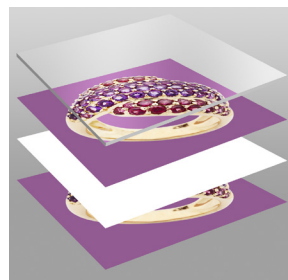
White ink print modes



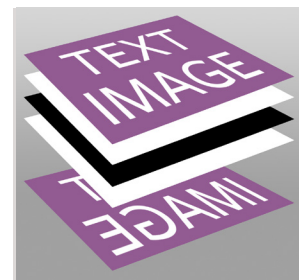
FLOOD WHITE



SHAPE WHITE



DAY/NIGHT BACKLIT



**FIVE-LAYER
BLOCKOUT GRAPHIC**



Wide versatility that opens up new opportunities

The powerful combination of EFI's hybrid and LED curing technology will not only help you meet the growing demands for higher quality with quicker turnaround times, but also offer you the ability to print on new and unique substrates, including high-value specialty substrates – opening doors to more applications and unique, creative opportunities.

Expand into wall coverings, décor and retail signage with the ability to print direct to rigid and flexible substrates with one printer.

Wide productivity that keeps the jobs moving



With productivity up to 2,477 ft² (230 m²) per hour, you'll be able to take on more jobs and keep them moving to satisfy customer demand for faster turnarounds.



Continuous Board printing is a standard feature and allows you to maximize the printer's full production speeds with large boards or multiple small boards.



Changeover from rigid to flexible printing is fast and easy, and the Pro 30h features dual roll printing for even more throughput.



Wide design features for true production environments

Fully enclosed image area keeps production area dust and debris from getting in and around the carriage

Dual touchscreen graphical user interface available on the front and back of printer for ease of operation



Advanced media-platen vacuum system with six chambers having their own independent vacuum power controls for hold down and preventing media movement

Includes an EFI Fiery® proServer Core digital front end (DFE), featuring FAST RIP acceleration technology, plus RIP and print on demand functionality or the ability to print pre-ripped files

EFI's market leading green LED technology



Brilliantly designed “cool cure” LED technology empowers you with the ability to do more for less. Increase your profit opportunity by offering more premium-margin jobs while reducing operating costs and your environmental footprint:

- Meet the growing demands for higher quality with quicker turnaround times while extending your range of supported substrates, including lower cost and added-value specialty media, with lower heat LED lamps
- Increases uptime and productivity with instant on/off and less maintenance
- Drives down operating costs with significantly less energy consumption (1.8 kW instead of 10 kW and lamps are only on during printing), less waste trying to find the right cure level, and fewer consumable parts
- Reduces waste with consistent color output and simple operation
- Satisfies customer requests for a greener print solution with low VOCs, lower power consumption, and less waste and consumables

The ultimate printing innovation – UltraDrop Technology from EFI



Demanding customers want ultra-quality, ultra-crispness, and ultra-capabilities. That's why EFI's UltraDrop Technology offers smaller drop sizes and more precise control. The results are ultra-impressive:

- Native 7 pL printheads with true multi-drop addressability
- High apparent resolution and high-definition print quality
- Outstanding smoothness in shadows, gradients, and transitions
- Superb text quality with four-point text in both standard and high quality, with fewer satellites and more clarity in all print modes

Inks made for **real results** in the real world

Our Genuine EFI ProGraphics™ Series UV Inks have been custom formulated based on real-world applications. And they've been exhaustively tested and optimized for our wide format printers. We use the same brilliantly colored pigments in each of the EFI ProGraphics UV ink sets, so you always get the same great extended color gamut regardless of which ink set you choose. With EFI ProGraphics UV inks, you get the quality and performance you'd expect from Genuine EFI Inks – so that you always print with flying colors.

High adhesion ink

EFI ProGraphics UV LED XA ink was developed with high adhesion properties for printing on an extensive range of rigid and flexible media, including corrugated plastics and other materials with adhesion challenges.

Turn CMYK into ROI

As your business evolves, you can change your EFI ProGraphics UV ink set¹ to match new applications and substrates. Minimizing color adjustments and ensuring a perfect color match every time is as easy as selecting the proper profile.



¹EFI ProGraphics Series UV Inks are NOT top loadable and require a simple changeover kit to move from one ink set to the other.

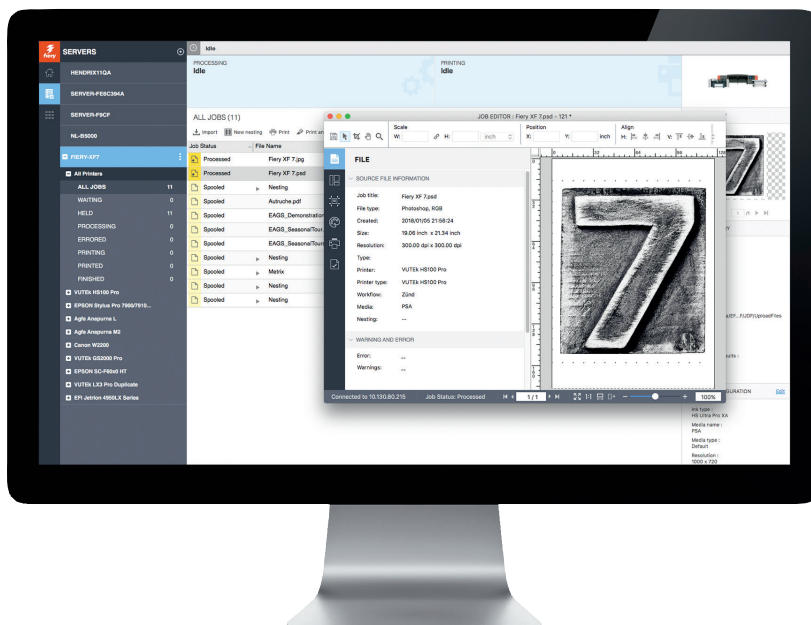
Driven by Fiery – the **world leader** in digital inkjet color printing



With over 30 years as a worldwide market leader in digital front-end innovation, Fiery DFEs provide outstanding image and color quality with features to make print results truly exceptional.

The high-performance, built-in, Fiery proServer Core comes with production, color, and layout features. It contains:

- Fiery XF server software for Windows® including:
 - Spot Color Option
 - Color Verifier Option
 - Cut Marks Option
 - Color Profiler Option
- Unlimited macOS® or Windows installations of Fiery Command WorkStation® with up to 10 concurrent connections
- One-year Fiery proServer hardware and Fiery XF software warranty



Add **intelligence** to your print business with EFI IQ

Unlock the value of your production data by connecting your printers to EFI IQ. Use the EFI IQ suite of cloud applications to make data-driven decisions so you can improve ROI, minimize cost, maximize profit, and boost revenue.

EFI IQ lets you connect your people, processes, and print devices, so you can make better data-driven decisions. Use the EFI IQ applications to:

- Visualize key production data and the current status of your printers in near real time
- Capture and transform print production data into actionable analytics to drive business improvement
- Stay connected to your print production systems, view print devices and monitor job data anytime, anywhere from your iOS and Android devices
- Receive alerts about production-blocking events, and automate the distribution of reports to ensure that you never miss any production issue

Build a stronger, more profitable business with your production data using EFI IQ applications.



Be ready for anything with EFI's Enhanced Service Program (ESP)



Ensure the success of your business with a comprehensive EFI ESP response-based agreement and peace-of-mind maintenance options for your EFI Pro 30h printer.

- Twelve months of Essential coverage, with 24-business hour (three business day) response
- Field service engineer labor and travel for repairs
- Non-consumable parts
- All printer software and hardware updates
- Priority technical phone support
- Coverage for your Fiery XF digital front end including all software updates and upgrades as well as telephone and email support during business hours with targeted response and resolution times
- Multi-printer discounts available
- Add one or more of our peace-of-mind options to your ESP contract to ensure additional printhead and belt replacements are covered if they are needed

TECHNICAL SPECIFICATIONS

| MEDIA/HANDLING | |
|--|---|
| Maximum printable width | 126 in (320 cm) |
| Maximum media thickness | 2 in (5.08 cm) |
| Six-zone, user-selectable vacuum system | |
| Maximum media weight on table | 200 lbs (90.7 kg) |
| Maximum roll weight | 440 lbs (200 kg) |
| Maximum roll diameter | 12 in (30.5 cm) |
| PRODUCTIVITY | |
| Express mode maximum speed | 2,477 ft ² /h (230 m ² /hr) |
| White printing at one-half CMYK speeds | |
| FILE FORMATS | |
| All popular desktop files formats, including Adobe® PostScript® 3™, EPS, TIFF, PDF, and RGB/CMYK | |
| ENVIRONMENTAL CONSIDERATIONS | |
| Temperature | 68–86 °F (20–30 °C) |
| Humidity: | 40%–80% (noncondensing) |
| Weight: | Approximately 6,835 lbs / 3100 kg uncrated |
| Dimensions (W x D x H): | 227 in x 76 in x 77 in (575 cm x 192 cm x 194 cm) |
| Electrical: | 200–240VAC, single phase, 50/60 Hz 32A |
| EFI PROGRAPHICS SERIES UV INKS | |
| 5.0-liter containers | |
| Twelve-month shelf life | |
| EFI FIERY DIGITAL FRONT END | |
| Ships with an EFI Fiery proServer Core digital front end | |

Let's be brilliant. Together.

We understand you want breakthrough technologies to lead you through your digital journey. That's why we're passionate about driving your business growth with a scalable portfolio of products, solutions, services, support, and world-class partnerships for the manufacturing of signage, packaging, textiles, ceramic tiles, building materials, commercial print, and personalized documents with a wide range of printers, inks, digital front ends, and workflow software. Our unwavering commitment is to increase your profits, cut costs, improve productivity, and optimize efficiency — job after job, year after year. We're obsessed with your success. And we definitely believe we have the right people, technology and experience to help your business achieve its goals. Visit www.efi.com or call 800-875-7117 for more information.



Nothing herein should be construed as a warranty in addition to the express warranty statement provided with EFI products and services.

AutoCal, Best Eye, ColorGuard, ColorPASS, ColorRight, ColorWise, Command WorkStation, Cretachrom, Cretaprint, the Cretaprint logo, Cretaprinter, Cretaroller, Divisional Graphics, Distancing Graphics, DocBuilder, Dynamic Wedge, EDOX, EFI, the EFI logo, Electronics For Imaging, FabriVu, Fast-4, FASTRIP, FASTDRIVE, Fiery, the Fiery logo, Fiery Compose, Fiery Driven, the Fiery Driven logo, Fiery Edge, Fiery Essential, Fiery HyperRIP, Fiery Impose, Fiery Impress, Fiery ImageViewer, Fiery Intensify, Fiery JobExpert, Fiery JobFlow, Fiery JobMaster, Fiery Navigator, Fiery Prep-it, Fiery Prints, the Fiery Prints logo, Fiery TrueBrand, FreeForm, InkIntensify, Inkware, IQ, MicroPress, OneFlow, PressVu, PrintMe, the PrintMe logo, Prograph, ProGraphics, RIPChips, RIP-While-Print, SafeGuard Graphics, Spot-On, Spot Pro, UltraDrop, UltraPress, UltraTex, UltraVu, UV Series 50, VUTEk, the VUTEk logo, and WebTools are trademarks or registered trademarks of Electronics For Imaging, Inc. and/or its wholly owned subsidiaries in the U.S. and/or certain other countries.

All other terms and product names may be trademarks or registered trademarks of their respective owners and are hereby acknowledged.