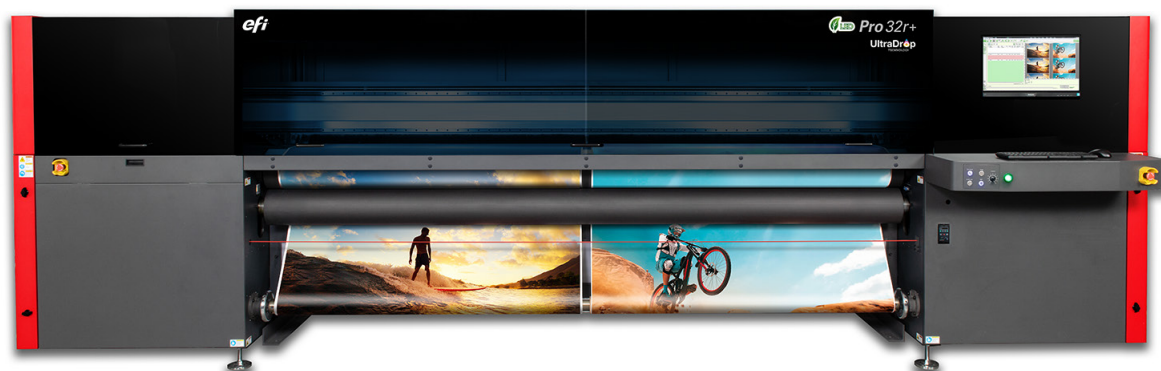




Grow. Profit.
Change the game.



Up your game

Greater profitability and a strong competitive advantage

Business is good. But it could be even better. You could up your game. Add capacity. Profit from more throughput and faster turns. And ratchet up your capabilities. You have room for another printer, but can one printer be a game-changer?

Yes, if it's the 3.2-metre EFI™ Pro 32r+ wide format roll-to-roll LED printer.

We designed it to be everything you need to be more competitive and profitable in an economical, all-in-one, production-level printer. For starters, you'll add significantly more capacity — roughly up to 5,000 square metres per month. And you'll be able to offer customers a wider range of applications — including white, textiles, and double-sided — on a wider range of substrates. All with lower running costs, thanks to better ink consumption and lower power bills.

Put it all together, and the Pro 32r+ changes the playing field. It's the one printer that will help you win more jobs, eliminate outsourcing, achieve faster turns, and confidently commit to larger capacity runs. Thanks to the robust and reliable EFI LED platform, it's game on.

At a glance

- Speed up to 256 sqm/hr
- Four colours plus optional white ink or clear ink
- Gen-5 printheads with native 7 pL droplets and UltraDrop™ Technology
- Up to 847 dpi true resolution
- LED for lower power consumption and the use of thinner substrates
- Integrated mesh kit
- Wrinkle analyser
- Backlit proofing lights
- Advanced software settings
- Includes a built-in Fiery® digital front end, featuring FAST RIP acceleration technology, plus RIP and print-on-demand functionality or the ability to print pre-ripped files at the printer interface
- EFI – 3M™ SuperRange XF inks with 3M™ MCS™ Warranty
- EFI SuperFlex ink for fleet graphics
- **Available with value-added options:**
 - White printing or clear ink
 - Slitters
 - Automatic blackout
 - Backlit
 - Media edge guard
 - 3.2 m Super duty winder
 - Dual roll split shafts
 - Media saving wizard
 - iPhone application
- **Advanced white printing for premium applications:**
 - Variety of white print-modes, up to five layers
 - Opaque white layer
 - Selective or spot
 - Can serve as a light diffuser in backlit applications



The ultimate printing innovation — UltraDrop Technology from EFI



Demanding customers want ultra quality, ultra crispness, and ultra capabilities. That's why EFI's UltraDrop Technology offers smaller drop sizes and more precise control. The results are ultra impressive:

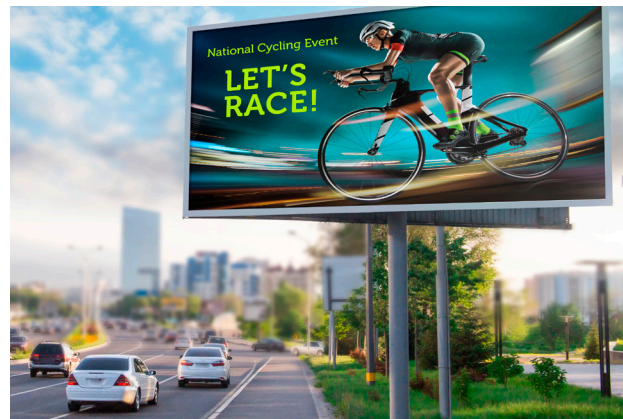
- Native 7 pL printheads with true multi-drop addressability
- High apparent resolution and high-definition print quality
- Outstanding smoothness in shadows, gradients, and transitions
- Superb text quality with four-point text in both standard and high quality, with fewer satellites and more clarity in all print modes

The power of green LED technology



Brilliantly designed cool-cure LED technology empowers you with the ability to do more for less. Increase your profit opportunity by offering more premium-margin jobs while reducing operating costs and your environmental footprint:

- Extends your range of supported substrates, including lower cost and added-value speciality media
- Increases uptime and productivity with instant on/off and less maintenance
- Drives down operating costs with significantly less energy consumption (1.8 kW instead of 10 kW) and fewer consumable parts
- Improves control over gloss/matte levels
- Reduces waste with consistent colour output and simple operation
- Satisfies customer requests for a greener print solution with low VOCs, lower power consumption, and less waste and consumables



EFI Pro 32r+

Printing technology

- Piezo drop-on-demand inkjet technology
- Eight printheads with 7pL UltraDrop Technology
- Up to 847 dpi true resolution
- Colours: CMYK, optional white or optional clear coat

Media/handling

- Handles a wide variety of flexible substrates
- Maximum printing width up to 3.2 m
- Maximum media weight: 200 kg
- Roll-to-roll, free-fall, and multi-roll (2 rolls of 1.6 m)
- Integrated mesh kit
- Optional 3.2 m Super duty winder

Productivity

- Maximum speed: 256 m² per hour
- Quick and easy media loading

EFI - 3M™ SuperRange XF inks

- LED-curable UV inks
- Small dot gain
- Wide colour gamut
- Environmental friendly
- Superb durability
- EFI – 3M™ SuperRange XF inks covered under the 3M™ MCS™ Warranty when printing with co-branded EFI and 3M™ UV inks, including white ink, on 3M™ flexible media

Environmental considerations

- Compressed air: 6.5 bar airflow of 110 L/min, dry and clean air only (not included)
- Operating temperature: 20° C - 30° C
- Humidity: (non-condensing)
 - Standard range – 30% - 80%
 - Optimal range – 50% - 80%
- Machine weight: 2,700 kg; crated: 3,200 kg
- Height: 186 cm
- Depth: 103 cm
- Width: 590 cm
- Electrical:
 - 220VAC 1 Phase +N + PE 25 Amp, 50/60 Hz
 - Printing consumption: 1.8 kW; peak consumption: 3.0 kW
- Integrated air cooling system

Built-in Fiery XF for EFI Pro 32r+

With Fiery® XF for EFI Pro 32r+ you get:

- Fiery XF server software for Windows® including:
 - Spot Colour support
 - FAST RIP
 - Cut Marks
 - Color Profiler
 - Color Verifier
- Unlimited macOS® or Windows installations of Fiery Command WorkStation®
 - Up to 10 concurrent connections
- One-year Software Maintenance & Support Agreement

EFI fuels success.

We develop breakthrough technologies for the manufacturing of signage, packaging, textiles, ceramic tiles, and personalised documents, with a wide range of printers, inks, digital front ends, and a comprehensive business and production workflow suite that transforms and streamlines the entire production process, increasing your competitiveness and boosting productivity.

Visit www.efi.com or call 0808 101 3484 (UK only) or +44 (0)1246 298000 (UK), or +61 (0) 7 3625 9200 (ANZ and Asia Pacific) for more information.



Nothing herein should be construed as a warranty in addition to the express warranty statement provided with EFI products and services.

AutoCal, Auto-Count, Best Eye, ColorGuard, ColorPASS, ColorRight, ColorWise, Command WorkStation, Cretachrom, Cretaprint, the Cretaprint logo, Cretaprinter, Cretaroller, Digital StoreFront, DocBuilder, Dynamic Wedge, EDOX, EFI, the EFI logo, Electronics For Imaging, EPCount, EPPPhoto, EPRegister, EPStatus, Estimate, FabriVu, Fast-4, FASTRIP, FASTDRIVE, Fiery, the Fiery logo, Fiery Compose, Fiery Driven, the Fiery Driven logo, Fiery DesignPro, Fiery Edge, Fiery Impose, Fiery ImageViewer, Fiery Intensify, Fiery JobExpert, Fiery JobFlow, Fiery JobMaster, Fiery Navigator, Fiery Prints, the Fiery Prints logo, FreeForm, GameSys, Hagen, InkIntensity, Inkware, IQ, iQuote, LapNet, Lector, Logic, MarketDirect StoreFront, MarketDirect VDP, MarketDirect Cross Media, Metrics, Metrix, MicroPress, Monarch, Monarch Planner, OneFlow, Optima, Optitex, Organizing Print, Pace, Pecas, Pecas Vision, PC-Topp, PressVu, PrinterSite, PrintFlow, PrintMe, the PrintMe logo, PrintSmith, PrintSmith Site, PrintSmith Vision, PrintStream, Profile, Process Shipper, Prograph, PSI, PSI Flexo, Radius, RIPChips, RIP-While-Print, Spot-On, Spot Pro, Synchro 7, Technique, UltraPress, UltraTex, UltraVu, UV Series 50, VisualCal, VUTEk, the VUTEk logo, and WebTools are trademarks or registered trademarks of Electronics For Imaging, Inc. and/or its wholly owned subsidiaries in the U.S. and/or certain other countries.

All other terms and product names may be trademarks or registered trademarks of their respective owners, and are hereby acknowledged.