



Five-layer printing on
EFI VUTEk 3r+/5r+ superwide
roll-to-roll LED printers



Images can be the same or different, as long as they are the same dimensions.



Shaped images can be used as long as they are symmetrical.

Five-layer printing (CWBWC) is used to create a print that has a blockout layer in the middle so you can print two right-reading images on clear media. The images used on the top and bottom layer can be the same or different. Shaped images can be used as long as they're symmetrical.

The final layered file is printed in a single pass on one side of the media.





RIP'ing and importing the files

The final print file is set up on the front end as: color, white, black, white, color. Two files need to be RIP'd for five-layer printing.

1. For each file, be sure to check "Bounding Box White" before printing (if printing a spot application, check "Spot White" in Fiery).
2. The file for the bottom layer, 4C-CWBWC-C1-N, must be RIP'd first as it will also print first. This is the image visible as you look through the clear material. This layer is automatically mirrored when importing the job into the front end.
3. The second file to be RIP'd is the top layer, 4C-CWBWC-C2-N, and is the last layer printed. This top image is printed right-reading.

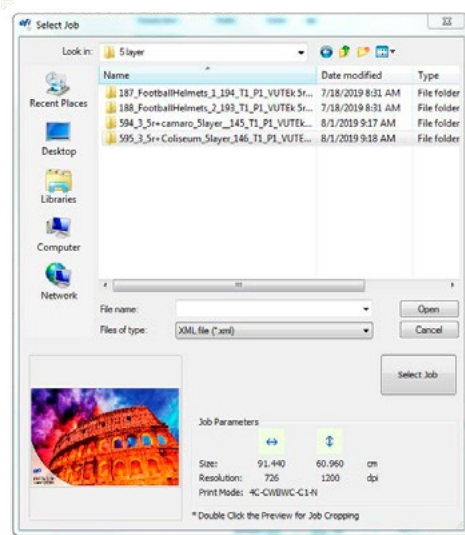
[Click to enlarge screen grab](#)

4. On the printer's front end, click on the "Groupings" tab from the queue.
5. Select "Multilayer" from the type dropdown.
6. Then, select "Block-out on Transparent Media" from the next dropdown.

Click to enlarge screen grab

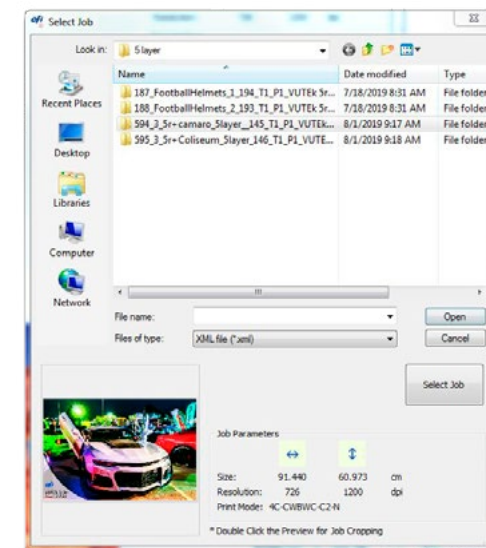


7. Click the "+" icon and select the first five-layer file, 4C-CWBWC-C1-N. The software will automatically mirror this image on the appropriate layer.



Click to enlarge screen grab

8. Click the "+" icon again and select the second file, 4C-CWBWC-C2-N.
9. Adjust any settings for the job (for example, lamp settings, rotation etc.).



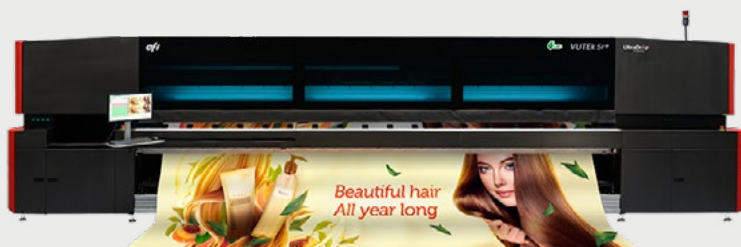
Click to enlarge screen grab



10. Select "Waiting" or hold and click the "Check Mark" to send the job to the Ready to Print queue.

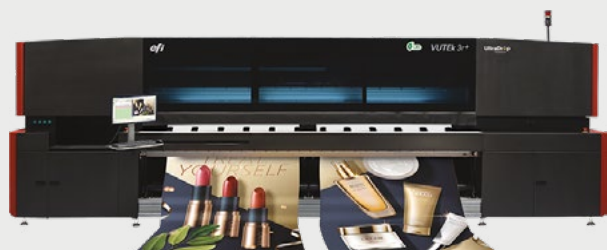
Click to enlarge screen grab

Check out the EFI Power Tools videos for the VUTEK 3r+ and 5r+ superwide roll-to-roll printers:



Click to play the optional [Motorized Winder Power Tool video](#)

Click to play the [Media Spreaders Power Tool video](#)



Click to play the optional [Roll & Tape Power Tool video](#)

Click to play the optional [Super Duty Winder Power Tool video](#)

EFI fuels success.

We develop breakthrough technologies for the manufacturing of signage, packaging, textiles, ceramic tiles, and personalized documents, with a wide range of printers, inks, digital front ends, and a comprehensive business and production workflow suite that transforms and streamlines the entire production process, increasing your competitiveness and boosting productivity. Visit www.efi.com or call 650-357-3500 for more information.



Nothing herein should be construed as a warranty in addition to the express warranty statement provided with EFI products and services.

The APPS logo, AutoCal, Auto-Count, Balance, BESTColor, BioVu, BioWare, ColorPASS, Colorproof, ColorWise, Command WorkStation, CopyNet, Cretachrom, Cretaprint, the Cretaprint logo, Cretaprinter, Cretaroller, Digital StoreFront, DocBuilder, DocBuilder Pro, DockNet, DocStream, DSFdesign Studio, Dynamic Wedge, EDOX, EFI, the EFI logo, Electronics For Imaging, Entrac, EPCount, EPPhoto, EPRegister, EPStatus, Estimate, ExpressPay, FabriVU, Fast-4, Fiery, the Fiery logo, Fiery Driven, the Fiery Driven logo, Fiery JobFlow, Fiery JobMaster, Fiery Link, Fiery Navigator, Fiery Prints, the Fiery Prints logo, Fiery Spark, FreeForm, Hagen, Inkintensity, Inkware, LapNet, Logic, Metrix, MicroPress, MiniNet, Monarch, OneFlow, Pace, Pecas, Pecas Vision, PhotoXposure, PressVu, Printcafe, PrinterSite, PrintFlow, PrintMe, the PrintMe logo, PrintSmith, PrintSmith Site, PrintStream, Print to Win, Prograph, PSI, PSI Flexo, Radius, Remoteproof, RIPChips, RIP-While-Print, Screenproof, SendMe, Sincrolor, Splash, Spot-On, TrackNet, UltraPress, UltraTex, UltraVu, UV Series 50, VisualCal, VUTEK, the VUTEK logo, and WebTools are trademarks of Electronics For Imaging, Inc. and/or its wholly owned subsidiaries in the U.S. and/or certain other countries.