



7 Warning Signs

that it's time to upgrade your roll-to-roll production printer

efi[®]

1

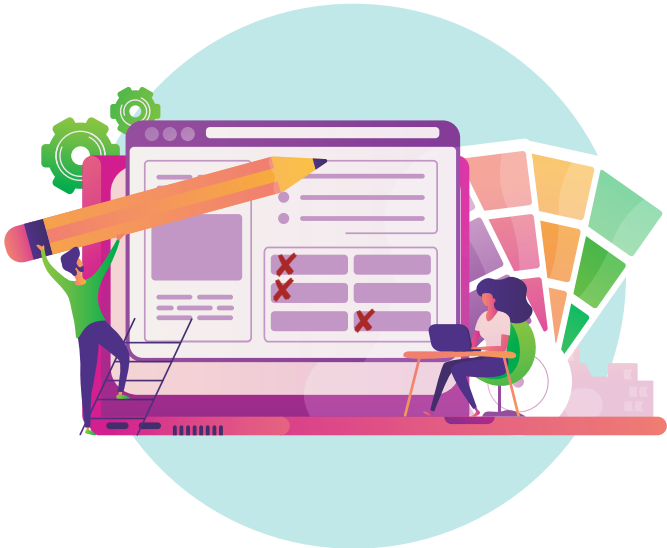
You're adding shifts or turning down jobs to meet tight deadlines

So much about your business comes down to one word: capacity

Turning away jobs isn't the answer. Adding shifts increases your costs. And building more floor space is a big risk. The smart way to add more capacity is to upgrade your roll-to-roll printer. Do that and your capacity issues improve immediately.

Today's EFIT™ LED roll-to-roll printers are the fastest in their class thanks to their high performance design and inline finishing tools. They maximize your capacity so you can:

- Spend less time per job
- Get more jobs out the door per day for more customers
- Meet customer requests for faster turnaround times while maintaining the same quality level
- Alleviate staffing shortages
- Eliminate extra shifts



2

You're losing out on new opportunities and markets



Your capabilities should be your competitive edge

If that edge is dull, it's time for a new EFI LED roll-to-roll printer. You can produce the widest variety of applications on a huge variety of flexible substrates, including fabrics. Switching between applications and media types is quick and easy. Best of all, you can offer a wider portfolio of high-margin applications such as:

- Retail POP
- Tradeshows graphics and exhibits
- Fleet graphics, car wrapping and truck curtains
- Wallpaper and home décor
- Wallcoverings and architectural graphics
- Window clings and graphics
- Day/night backlights
- Construction and building wraps

3

Your energy and labor costs are eating away at your margins



Energy costs are going up and up

But you can bring them down and down with a new EFI LED roll-to-roll printer. LED reduces power consumption, sending more money to your bottom line. In fact, FOGRA stats show energy reductions of up to 82%* when compared to devices with conventional mercury arc lamps.

One new EFI LED roll-to-roll printer can potentially replace two or three older models, which saves you floor space as well as labor. And with our optional Power Tools, you may not need to purchase additional equipment, such as cutters and coaters.

Put it all together and you save on energy and labor costs as you save floor space.

*Calculations from FOGRA Energy Efficiency Project: "Energy Efficiency of Large and Small Format Printing Systems."

4

You're throwing away too much unprinted media at the end of each roll



Simply put, saving media saves money

EFI LED roll-to-roll printers have several innovative features that do just that:

- Unique media path provides 300% better media utilization – only 15.7 in (40 cm) is wasted on each roll loading
- You can save 8 to 10 feet (2.4 to 3 meters) or more on each roll, saving thousands of feet/meters per year
- The Media Saving Wizard ensures each media roll gets fully used
- The Wrinkle Analyzer helps avoid head strikes caused by media wrinkles, preventing ruined jobs
- Media Edge Guards protect the print carriage and printheads from crashing into uneven media edges, eliminating ruined jobs and wasted media

5

You're wasting too much ink



Your ink costs will never end, but they can be less

With new EFI LED roll-to-roll printers, ink usage is 30% to 50% better than EFI legacy and other market competitors thanks to improved LED ink formulations. Here's more ink on our ink:

- Our ink yield average is 1,600 ft² (149 m²) of printing from one liter of ink
- Average ink consumption, per layer, at full coverage: 1,615 ft²/ liter (150 m²/ liter)
- With today's technology advancements, 4-color printing can achieve the same quality and color gamut as 6- or 8-color printing
- EFI algorithms provide superior masking, laying precise drops
- Our UltraDrop™ Technology printheads produce smaller droplets

6

Customers are sending back jobs because of quality issues



There's nothing worse than a customer sending back a job – unless, they send it back twice

Today's EFI LED roll-to-roll printers with UltraDrop Technology end any graininess or imperfect quality issues you have with legacy roll-to-roll printers. Delight your customers with higher quality printing:

- Expanded color gamut
- Smooth gradient transitions
- Vivid and crisp colors
- Fine details
- Up to 9 colors with optional white and clear
- Up to 1200 dpi
- Improved control over gloss/matte levels
- Precise and sharp three-point text

7

Your productivity is down because your equipment needs upgrading



Today's EFI LED roll-to-roll printers bring fresh flexibility and versatility to your operations

Here are EFI innovations you won't find on your legacy roll-to-roll system:

- Inline X-axis and Y-axis trimming and cutting solutions eliminate the need for additional cutting stations – saving labor, floorspace, and time
- The inline coating feature eliminates external laminators or manual coating processes
- Automatic double-sided printing for specialty applications gets jobs done faster
- Many more Power Tools to boost your productivity



It's time to upgrade to the latest roll-to-roll printers from EFI

Upgrading to today's EFI LED roll-to-roll printers drives maximum performance, reduces costs, increases your range of higher-margin applications, and all with rock solid reliability. Replace your legacy roll-to-roll printer and boost business with a complete printing and finishing solution.

Upgrade to EFI and up your game



EFI VUTEK Q3r & Q5r

The EFI VUTEK® Q3r and Q5r roll-to-roll printers go beyond to provide a complete print to finished graphic workflow – from RIP to finished product – on the same platform. Think of it as one big competitive edge that encompasses automatic in-line quality inspection, inline slitting and cutting, Roll & Tape, and more.



EFI VUTEK 3r+ & 5r+

The EFI VUTEK 3r+ and 5r+ are technically advanced LED roll-to-roll printers with enhanced platform features that offer extreme image quality, extreme throughput speeds and an extreme range of options – giving you the lowest total cost of ownership. And an extremely impressive bottom line.



EFI Pro 32r+

We designed the EFI Pro 32r+ roll-to-roll LED printer to be everything you need to be more competitive and profitable in an economical, all-in-one, production-level printer. Win more jobs, eliminate outsourcing, achieve faster turns and confidently commit to larger capacity runs.



EFI VUTEK D3r & D5r

Everything about the EFI VUTEK D3r and D5r is designed to support your designs. They're the most advanced mid-range roll-to-roll printers on the market – created especially for the industrial printing demands of high-quality, volume producers.

[Visit Us Online](#)

Let's be brilliant. Together.

We understand you want breakthrough technologies to lead you through your digital journey. That's why we're passionate about driving your business growth with a scalable portfolio of products, solutions, services, support, and world-class partnerships for the manufacturing of signage, packaging, textiles, ceramic tiles, building materials and personalized documents with a wide range of printers, inks, and digital front ends. Our unwavering commitment is to increase your profits, cut costs, improve productivity, and optimize efficiency — job after job, year after year. We're obsessed with your success. And we definitely believe we have the right people, technology and experience to help your business achieve its goals. Visit www.efi.com or call 800-875-7117 for more information.



Nothing herein should be construed as a warranty in addition to the express warranty statement provided with Efi products and services.

AutoCal, Auto-Count, Best Eye, ColorGuard, ColorPASS, ColorRight, ColorWise, Command WorkStation, Cretachrom, Cretaprint, the Cretaprint logo, Cretaprinter, Cretaroller, Digital StoreFront, Divisional Graphics, Distancing Graphics, DocBuilder, Dynamic Wedge, EDOX, Efi, the Efi logo, Electronics For Imaging, EPCount, EPPhoto, EPRegister, EPStatus, Estimate, FabriVU, Fast-4, FASTRIP, FASTDRIVE, Fiery, the Fiery logo, Fiery Compose, Fiery Driven, the Fiery Driven logo, Fiery DesignPro, Fiery Edge, Fiery Impose, Fiery ImageViewer, Fiery Intensify, Fiery JobExpert, Fiery JobFlow, Fiery JobMaster, Fiery Navigator, Fiery Prints, the Fiery Prints logo, FreeForm, GameSys, Hagen, InkIntensity, Inkware, IQ, iQuote, LapNet, Lector, Logic, MarketDirect StoreFront, MarketDirect VDP, MarketDirect Cross Media, Metrics, Metrix, MicroPress, Monarch, Monarch Planner, OneFlow, Optima, Optitex, Organizing Print, Pace, Pecas, Pecas Vision, PC-Topp, PressVu, PrinterSite, PrintFlow, PrintMe, the PrintMe logo, PrintSmith, PrintSmith Site, PrintSmith Vision, PrintStream, Profile®, Process Shipper, Prograph, ProGraphics, PSI, PSI Flexo, Radius, RIPChips, RIP-While-Print, SafeGuard Graphics, Spot-On, Spot Pro, Synchro 7, Technique, UltraDrop, UltraPress, UltraTex, UltraVu, UV Series 50, VisualCal, VUTEk, the VUTEk logo, and WebTools are trademarks or registered trademarks of Electronics For Imaging, Inc. and/or its wholly owned subsidiaries in the U.S. and/or certain other countries.

All other terms and product names may be trademarks or registered trademarks of their respective owners and are hereby acknowledged.