



Nozomi 12000 MP

Single-pass LED Inkjet Technology
for Metal, Aluminum, and Tinplate Packaging

Sharpen your
competitive edge
with digital



If it is metal, we can make it memorable. **Together**

EFI™ is a global technology company, leading the worldwide transformation from analog to digital imaging by developing breakthrough technologies that work together to increase profits, lower costs, improve productivity, and optimize efficiency.

The metal packaging industry can now benefit from highly flexible, industrial digital inkjet printing with the advanced capabilities, efficiencies, and sustainable printing of the EFI Nozomi 12000 MP single-pass printer. It's specifically designed for printing on metal, aluminum, and tinplate packaging and built for 24/7 production.

- Prints direct onto the sheets without the need for plates
- Industrial printing speeds of up to 164 linear ft/min (50 linear m/min)
- Maximum print width of 3.9 ft (1200 mm)
- Innovative imaging technology and ink delivery system preserves printhead life and minimizes stoppages
- Full line length is under 66 ft (20 m)



With Genuine EFI Nozomi Inks, you always print with flying colors

EFI Nozomi 12000 MP inks are designed with specific properties to print brilliant and durable images on metal substrates while maintaining flexibility for forming.

- Optimal characteristics in terms of color and performance
- Wide color space that covers 83% of the Pantone® gamut
- Unique white ink option
- EFI Nozomi UV LED inks do not contain hazardous VOCs, do not require vapor recovery and are GREENGUARD Gold certified (the GREENGUARD Gold standard includes health-based criteria for additional chemicals and requires lower total VOC emissions levels)

Driven by Fiery, the world leader in digital front end innovation



To succeed in today's highly competitive market, it is critical to have a digital front end (DFE) with integrated workflow and color management to achieve higher operational efficiency and output quality. The Fiery® NZ-1000 DFE provides outstanding image and color quality with features to make your print results truly exceptional.

- Advanced color management and extensive toolset for late-stage image editing
- Exceptional print and color quality for complex, graphically rich content
- Stunning color with the smoothest color blends, maximum shadow detail, and superb image definition
- Accurate reproduction of brand colors plus color matching for consistent print results
- Efficient job management with easy handling of short runs and versioned or variable data printing jobs
- Full visibility into your production with accurate ink estimates and reporting of the actual ink used in print

Print direct to metal sheet. **Brilliantly.**

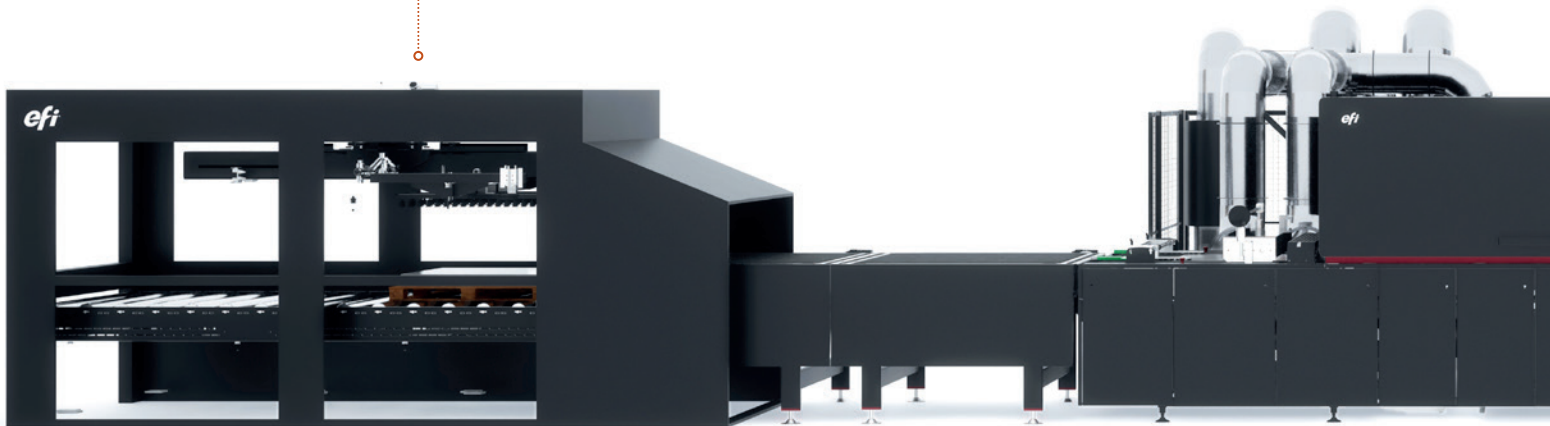
The EFI Nozomi 12000 MP industrial digital press delivers high-quality printing at industrial speeds, directly onto sheets without the need for plates – providing you with a brilliant competitive edge.

FEEDER

- Automatic sheet to sheet feeder
- Up to 3,000 sheets/hour
- Max. size: 47 x 39 in · 1.200 x 1.000 mm
- Min. size: 27.6 x 19.7 in · 700 x 500 mm
- Thickness: 0.005 to 0.016 in · 0,13 to 0,40 mm
- Up to 5,512 lb · 2.500 kg loading
- Double sheet sensor and reject

PRINTER

- Adjustable vacuum transport
- Adjustable print gap for optimal quality
- Laser detector – prevents printhead strikes
- Vacuum in between printing bars
- User-friendly UI
- Automatic nozzle plate cleaning
- Integrated cleaning belt system
- Fiery® Z-1000 digital front end



REGISTRATION TABLE

- Registration table to ensure squaring and guiding of the sheets, and flow control
- Reject table included
- Up to 3,000 sheets/hour
- Max. size: 47 x 39 in · 1.200 x 1.000 mm
- Min. size: 27.6 x 19.7 in · 700 x 500 mm
- Thickness: 0.005 to 0.016 in · 0,13 to 0,40 mm
- Square tolerance: 0.039 in · 1 mm

TRANSITION TABLE

- Flow control table.
- Up to 3,000 sheets/hour
- Max. size: 47 x 39 in · 1.200 x 1.000 mm
- Min. size: 27.6 x 19.7 in · 700 x 500 mm
- Thickness: 0.005 to 0.016 in · 0,13 to 0,40 mm

INK CONFIGURATIONS

BASE



OPTIONAL



STACKER

- Electromagnetic stacker
- Up to 3,000 sheets/hour
- Max. size: 47 x 39 in · 1.200 x 1.000 mm
- Min. size: 27.6 x 19.7 in · 700 x 500 mm
- Thickness: 0.005 to 0.016 in · 0,13 to 0,40 m
- Up to 5,512 lb · 2.500 kg loading

Edge out the competition with **superior** printed metal packaging



Quicker response to market demands

With the digital power of the EFI Nozomi 12000 MP printer, you can improve your time-to-market and sharpen your competitive edge.

- Rapid prototyping and immediate new product development
- Faster set-up and turnaround times
- Any batch size is profitable, allowing you to do just-in-time production
- Total customization



Maximum productivity and process efficiencies that lower costs

The Nozomi 12000 MP printer features a robust design for heavy industrial use for high productivity and maximum reliability.

- Non-clogging, high-performance printheads that don't need to be changed frequently
- Designed for easy operation, maintenance, and serviceability
- Intuitive, user-friendly interface
- Powerful image management and data collection software
- Eliminates make-ready, lowering your cost to manufacture



Dazzling high-quality graphics printing

The Nozomi 12000 MP printer is the most efficient way to produce superior printed metal packaging.

- High viscosity inks provide excellent color saturation and coverage
- Grayscale levels and high-speed jetting printheads result in increased accuracy and smooth color gradients
- Artificial vision system for color uniformity, defect, and nozzle out detection
- Unique white ink option for more application possibilities
- Fiery digital front-end drives the printer with advanced imaging technology



Mindful sustainability

The Nozomi 12000 MP printer balances efficient processes, lower resource consumption, and less waste for more sustainable printing.

- GREENGUARD Gold certified inks with virtually no VOC emissions
- No printing plates or ink kitchen needed, no overproduction, and simplified inventories
- Less waste generated especially during setting up

Let's be brilliant. Together.

We understand you want breakthrough technologies to lead you through your digital journey. That's why we're passionate about driving your business growth with a scalable portfolio of products, solutions, services, support, and world-class partnerships for the manufacturing of signage, packaging, textiles, ceramic tiles, and building materials with a wide range of printers and inks. Our unwavering commitment is to increase your profits, cut costs, improve productivity, and optimize efficiency — job after job, year after year. We're obsessed with your success. And we definitely believe we have the right people, technology and experience to help your business achieve its goals. Visit www.efi.com or send an email to info@efi.com for more information.



Nothing herein should be construed as a warranty in addition to the express warranty statement provided with EFI products and services.

BDR, Cretachrom, Cretaprint, the Cretaprint Logo, Cretaprinter, Cretaroller, Divisional Graphics, Distancing Graphics, EFI, the EFI logo, Electronics For Imaging, FabriVU, Fast-4, Inèdit, Inkintensity, Inkware, neoCatalog, neoStampa, neoTextil, PressVu, ProGraphics, Rialco, Riaplas, SDC, SafeGuard Graphics, UltraDrop, UltraPress, UltraTex, UltraVu, UV Series 50, VUTEK, and the VUTEK logo are trademarks or registered trademarks of Electronics For Imaging, Inc. and/or its wholly owned subsidiaries in the U.S. and/or certain other countries.

All other terms and product names may be trademarks or registered trademarks of their respective owners and are hereby acknowledged.