



## VUTEk® X3r and X5r

Superwide Roll-to-roll Inkjet Printers

Engineered for  
high-volume production.  
Built for your **success.**



# Engineered for brilliance

The EFI™ VUTEk® Xr Series of roll-to-roll LED printers are brilliantly engineered for high-volume production of a wide range of indoor and outdoor sign and display applications. Carefully integrated automation, software, and hardware work together to support full-shift unattended printing, deliver a complete print-to-finished-graphic workflow system on the same platform, and take image quality at production-level speeds to a new level.

Built for your success, the 3.5-meter VUTEk X3r and 5.2-meter VUTEk X5r printers are everything you would expect from an EFI VUTEk roll-to-roll LED printing system, but like nothing you have seen before.



# Push the boundaries of brilliance



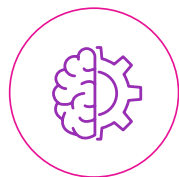
## Maximum productivity that assures more profits

- VUTEk X3r up to 6,566 ft<sup>2</sup> (610 m<sup>2</sup>) per hour
- VUTEk X5r up to 8,084 ft<sup>2</sup> (751 m<sup>2</sup>) per hour



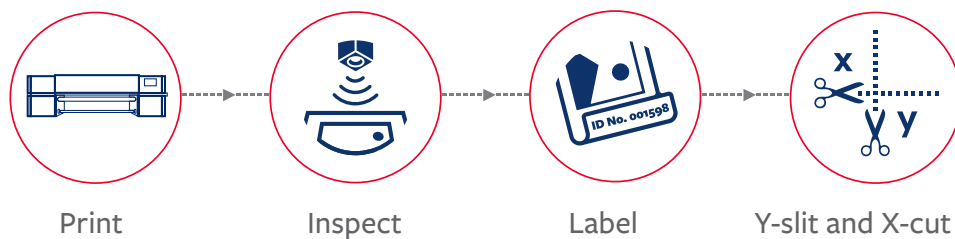
## High quality printing that wins more jobs

- CMYK, optional white and UltraClear Coat
- 5 pL drop sizes and true resolution up to 1200 dpi
- Superb white ink printing performance in single- and multi-layer print modes
- White ink and UltraClear Coat print together for increased design possibilities



## Innovative technology that supports minimal operator intervention

- In-line and offline verification of media roll length and ink tank levels, Wrinkle Analyzer, and mobile operator alerts
- Auto Mesh printing for full shift, non-stop continuous mesh printing
- Nozzle Compensation for monitoring nozzle health and ensuring consistent print quality
- Large and heavy roll media handling solutions for continuous printing



## Inline finishing workflow that drives production savings

Automate the complete printing and finishing process on the fly, in a single system with EFI's unique inline finishing workflow.

- Includes all or any combination of the following components:
  - Printing
  - Automatic inspection of printed output
  - Printing customer information on the back of the media
  - Vertical slitting and trimming
  - Horizontal cutting
- Saves valuable time and eliminates bottlenecks at finishing stations
- Replaces additional expensive finishing equipment and saves valuable floor space
- Ensures perfect print quality with minimal operator intervention
- Prevents finishing, shipping, and installation errors
- Increases yield

## Power Tools to boost your capabilities and profits

The VUTEk Xr Series of roll-to-roll printers is offered with EFI's rich collection of value-added Power Tool options and software to give you the flexibility to automate the complete printing and finishing process, minimize waste, and expand your capabilities, application offerings, and profit opportunities.



**Y-slitter** – single- or double-bladed – for separating multiple jobs on a single, full-width roll, minimizing media waste, and with waste collectors to eliminate the mess.



**X-cutter** cuts media on the X-axis on the fly, without slowing down printing.



**InSpec** automatic inline print quality monitoring system that can identify various print imperfections and fix them on-the-fly, using EFI's unique roll-to-roll Nozzle Compensation System.



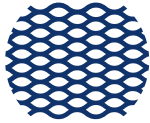
**ID Backprint** for printing customer information on the back side of the media. Also available with white ink for color-backed media.



**Automatic Backlit** supports multi-roll and enables printing each side with a different print mode.



**Automatic Blockout** is available for multi-roll and supports cutting and slitting.



---

**Auto Mesh System** for a faster, easier, and cleaner way to print on mesh and other porous substrates.



---

**White Printing** with a variety of multi-layer print modes.



---

**UltraClear Coat** can be used for decorative applications or as a final protective coating. It prints inline, simultaneously with the image, saving time versus using a separate offline coating system, and in gloss or matte finishes.



---

**Motorized Winders** are an integrated winder and unwinder solution with motorized pneumatic inflatable core shafts for precise and excellent media collection.



---

**Media Spreaders** are a pair of clamp-like devices that stretch the media sideways to enable neat media inlet into the printer.



---

**Three-meter Super Duty Winder** is a fully integrated unwinder or rewinder option for 3- and 5-meter EFI VUTEk roll-to-roll printers.



---

**Wrinkle Analyzer** helps avoid printhead strikes caused by media wrinkles, saving time and money by preventing ruined jobs and enabling the use of lower-cost media.



---

**Auto Maintenance Kit** enables printer operators to self-diagnose and fix print quality issues, including an uncalibrated printer and missing or deficient nozzles.

---



## EFI's market leading green LED technology



Brilliantly designed “cool cure” LED technology empowers you with the ability to do more for less. Increase your profit opportunity by offering more premium-margin jobs while reducing operating costs and your environmental footprint:

- Meet the growing demands for higher quality with quicker turnaround times while extending your range of supported substrates, including lower cost and added-value specialty media, with lower heat LED lamps
- Increases uptime and productivity with instant on/off and less maintenance
- Drives down operating costs with significantly less energy consumption (1.8 kW instead of 10 kW and lamps are only on during printing), less waste trying to find the right cure level, and fewer consumable parts
- Reduces waste with consistent color output and simple operation
- Satisfies customer requests for a greener print solution with low VOCs, lower power consumption, and less waste and consumables

## Genuine EFI Inks for a super-wide range of applications

EFI - 3M™ SuperRange UV LED Inks offer a hard surface cure, wide color gamut, and excellent adhesion properties for a super-wide range of indoor and outdoor applications. And they are environmentally friendly GREENGUARD and GREENGUARD Gold certified inks with no VOCs and no odor. Add the industry-leading 3M™ MCS™ Warranty<sup>1</sup> when printing with cobranded EFI and 3M UV LED inks on 3M flexible media, and you get all the quality and performance you'd expect from Genuine EFI Inks – so you always print with flying colors.



3M™ MCS™ Warranty



GREENGUARD

PRODUCT CERTIFIED FOR  
LOW CHEMICAL EMISSIONS  
UL.COM/GG  
UL 2818



GREENGUARD

PRODUCT CERTIFIED FOR  
LOW CHEMICAL EMISSIONS  
UL.COM/GG  
UL 2818

GOLD

<sup>1</sup> Testing in progress.

# Driven by Fiery – the **world leader** in digital inkjet color printing



With over 30 years as a worldwide market leader in digital front-end innovation, Fiery DFEs provide outstanding image and color quality with features to make print results truly exceptional.

The high-performance, built-in, Fiery proServer Core comes with production, color, and layout features. It contains:

- Fiery XF server software for Windows® including:
  - Spot Color Option
  - Color Verifier Option
  - Cut Marks Option
  - Color Profiler Option
- Unlimited macOS® or Windows installations of Fiery Command WorkStation® with up to 10 concurrent connections
- One-year Fiery proServer hardware and Fiery XF software warranty



## TECHNICAL SPECIFICATIONS

MEDIA/HANDLING	
Maximum printing width	VUTEk X3r: 137 in (348 cm) VUTEk X5r: 208 in (520 cm)
Roll-to-roll, free-fall, and multi-roll (VUTEk X3r: 2 rolls of 63 in /1.6 m; VUTEk X5r: 3 rolls of 63 in /1.6 m)	
300% better media utilization—only 16 in (40 cm) wasted on each roll loading	
Optional Motorized Winders enable working with large media rolls up to 882 lb (400 kg) for continuous, uninterrupted work	
Optional Super Duty Rewinder enables working with extra-large media rolls up to 1,750 lb (793 kg) for continuous, uninterrupted work	
Optional Auto Mesh system for full-shift uninterrupted printing on mesh and other porous media	
ENVIRONMENTAL CONSIDERATIONS	
Compressed air	95 psi (6.5 bar) airflow of 4 cf/m (110 L/min), dry and clean air only (not included)
Operating temperature	68 °F - 86 °F (20 °C - 30 °C)
Humidity	<ul style="list-style-type: none"> <li>• Standard range: 30% - 80% (non-condensing)</li> <li>• Optimal range: 50% - 80% (non-condensing)</li> </ul>
Dimensions (H x W x L)	VUTEk X3r: 82.7 in (210 cm); with emergency light 98 in (250 cm) x 272 in (690 cm) x 70.8 in (180 cm) VUTEk X5r: 82.7 in (210 cm); with emergency light 98 in (250 cm) x 331 in (840 cm) x 70.8 in (180 cm)
Machine weight	VUTEk X3r: Net: 14,109 lb (6,400 kg); Crated: 15,873 lb (7,200 kg) VUTEk X5r: Net: 16,534 lb (7,500 kg); Crated: 18,739 lb (8,500 kg)
Electrical	230/380 VAC 3 Phase +N + PE 32 Amp 50/60 Hz - Printing consumption: 2.9 KW, Peak consumption: 5.7 KW
Chiller	Cooling capacity 3.6 kW — required for LED UV curing (included)
DIGITAL FRONT END	
Ships with a Fiery® proServer	
Other RIP solutions supported	
File formats: EPS, PS, TIFF, PDF, JPEG	

## Let's be brilliant. Together.

We understand you want breakthrough technologies to lead you through your digital journey. That's why we're passionate about driving your business growth with a scalable portfolio of products, solutions, services, support, and world-class partnerships for the manufacturing of signage, packaging, textiles, ceramic tiles, and building materials with a wide range of printers and inks. Our unwavering commitment is to increase your profits, cut costs, improve productivity, and optimize efficiency — job after job, year after year. We're obsessed with your success. And we definitely believe we have the right people, technology and experience to help your business achieve its goals. Visit [www.efi.com](http://www.efi.com) or send an email to [info@efi.com](mailto:info@efi.com) for more information.



Nothing herein should be construed as a warranty in addition to the express warranty statement provided with EFI products and services.

BDR, Cretachrom, Cretaprint, the Cretaprint logo, Cretaprinter, Cretaroller, Divisional Graphics, Distancing Graphics, EFI, the EFI logo, Electronics For Imaging, FabriVU, Fast-4, Inèdit, Inkintensity, Inkware, neoCatalog, neoStampa, neoTextil, PressVu, ProGraphics, Rialco, Riaplas, SDC, SafeGuard Graphics, UltraDrop, UltraPress, UltraTex, UltraVu, UV Series 50, VUTEk, and the VUTEk logo are trademarks or registered trademarks of Electronics For Imaging, Inc. and/or its wholly owned subsidiaries in the U.S. and/or certain other countries.

All other terms and product names may be trademarks or registered trademarks of their respective owners and are hereby acknowledged.